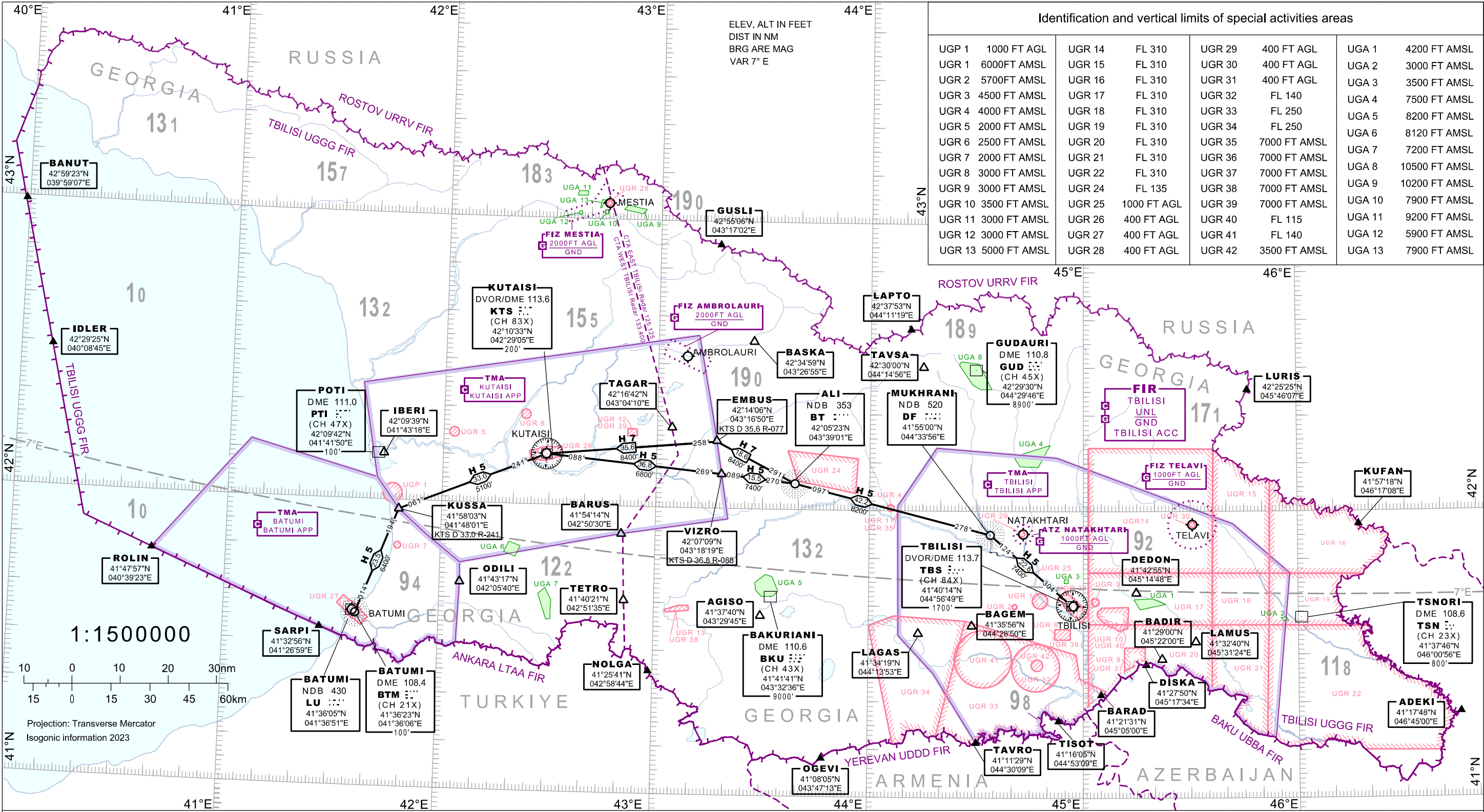


ENR 6 En-route Charts**ENR 6.1**

| Chart Name | Page |
|--|-------------|
| Enroute chart - ICAO (Conventional navigation routes) | ENR 6-3 |
| Enroute chart - ICAO (Area navigation RNAV routes) | ENR 6-5 |
| Prohibited, restricted and aerial sporting areas chart - Index chart | ENR 6-7 |
| Bird migration routes (spring) - Index chart | ENR 6-9 |
| Bird migration routes (autumn) - Index chart | ENR 6-11 |
| Free Route Airspace South Caucasus (FRASC) - Index chart | ENR 6-13-1 |
| FRASC Lowest available level (LAL) sector's coordinates | ENR 6-13-3 |
| FRASC Lowest available level (LAL) sector's coordinates (continuation) | ENR 6-13-5 |
| Enroute ATC Surveillance Minimum Altitude chart - Index chart | ENR 6-15-1 |
| Enroute ATCSMAC sector's coordinates | ENR 6-15-3 |
| Enroute ATCSMAC sector's coordinates (continuation) | ENR 6-15-5 |

PAGE INTENTIONALLY LEFT BLANK

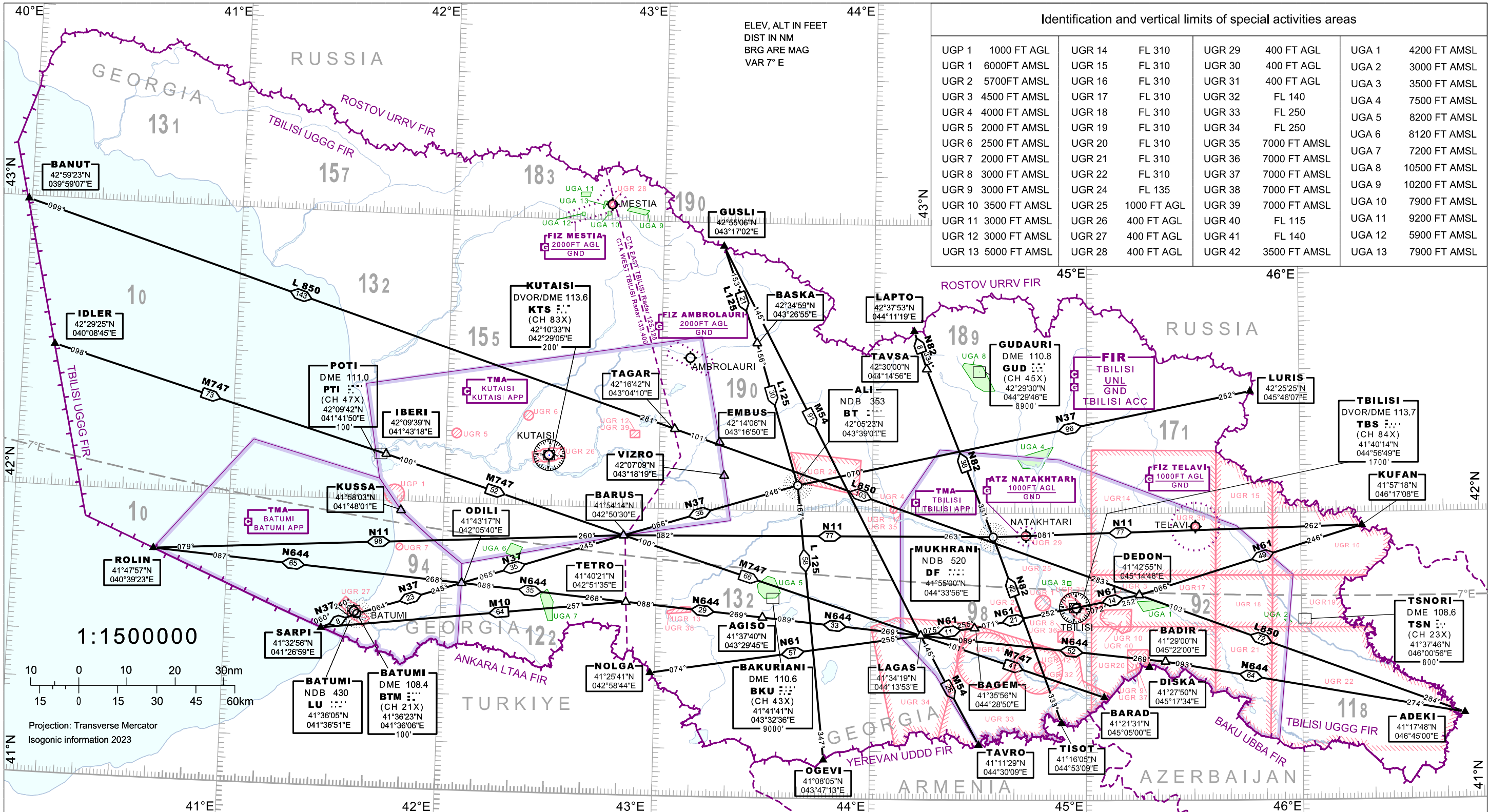
ENROUTE CHART - ICAO (Conventional navigation routes)



| COMMUNICATION FACILITIES | | | | | | | | | | | | | | | | | |
|--|--|--|--|---|--|--|--|---|--|--|--|--|--------------------------------------|------------------------|----------------------------|-----------------------|-----------------------|
| TBILISI ACC Tbilisi Radar | | EAST UPPER Sector FL 660 FL345/FL355/FL365/FL375 | | EAST LOWER Sector FL345/FL355/FL365/FL375 FL85 or 2000FT AGL whichever is higher Primary-125.125 Secondary-135.125 | | WEST UPPER Sector FL 660 FL345/FL355/FL365/FL375 | | WEST LOWER Sector FL345/FL355/FL365/FL375 FL85 or 2000FT AGL whichever is higher Primary-133.400 Secondary-135.625 | | TBILISI APP-134.600 TWR Primary-119.000 TWR Secondary-128.000 INFO-124.150 ATIS-132.800 | | KUTAIISI APP-127.100 TWR-125.500 | BATUMI APP-124.425 TWR-118.600 | MESTIA INFO-121.100 | AMBROLAURI INFO-119.850 | NATAKHTARI 131.750 | TELAVI TWR-120.000 |
| CTA EAST Primary-125.125 Secondary-135.125 | CTA WEST Primary-133.400 Secondary-135.625 | | | | | | | | | | | | | | | | |

PAGE INTENTIONALLY LEFT BLANK

ENROUTE CHART - ICAO (Area navigation (RNAV) routes)



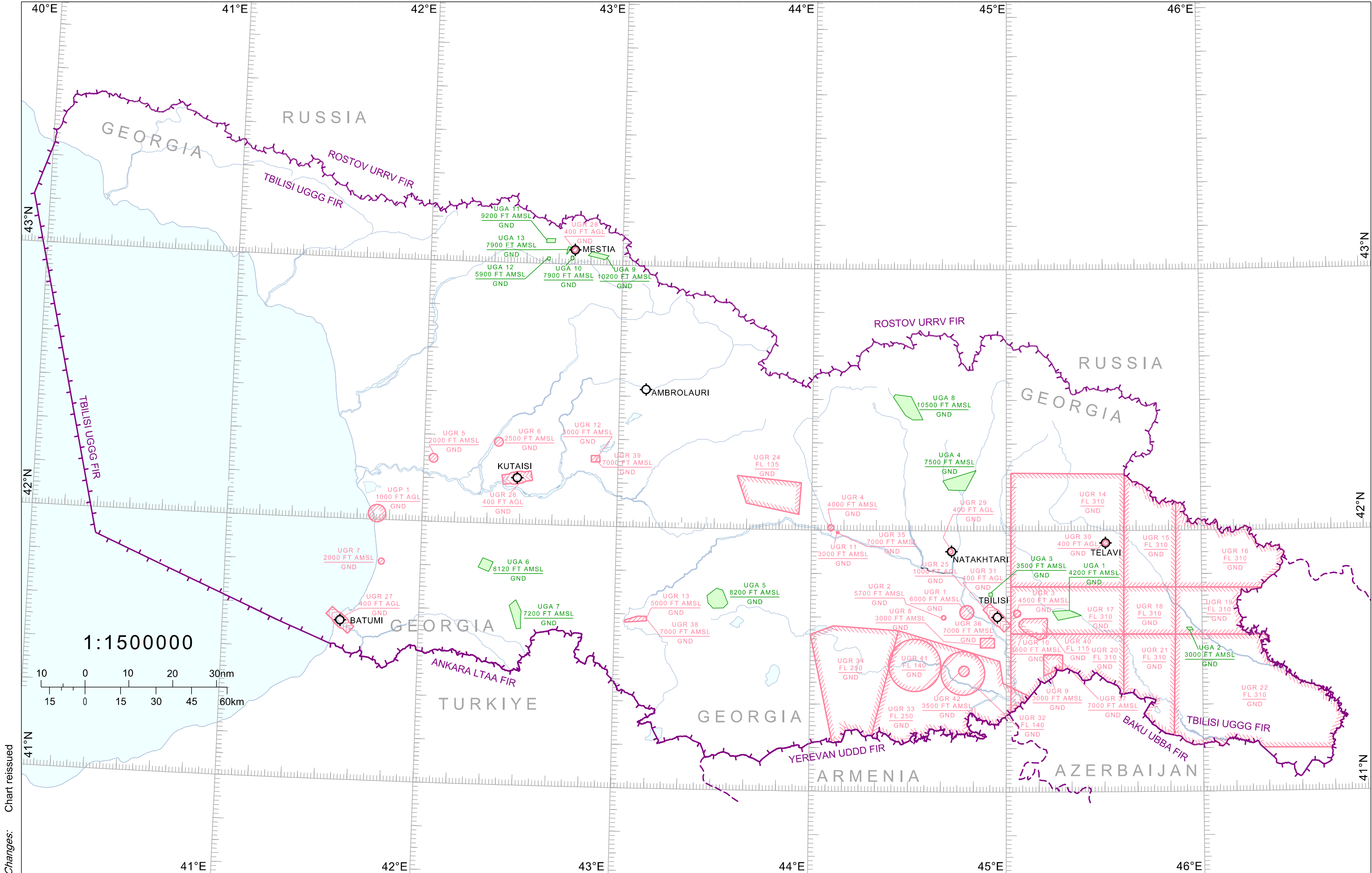
COMMUNICATION FACILITIES

| | | | | | | | | | | | | | | | | | | | | | | | |
|--|--|--|--|---|--|--|--|---|--|--|--|--|--|--------------------------------------|--|------------------------|--|----------------------------|--|-----------------------|--|-----------------------|--|
| TBILISI ACC Tbilisi Radar | | EAST UPPER Sector FL 660 FL345/FL355/FL365/FL375 | | EAST LOWER Sector FL345/FL355/FL365/FL375 FL85 or 2000FT AGL whichever is higher Primary-125.125 Secondary-135.125 | | WEST UPPER Sector FL 660 FL345/FL355/FL365/FL375 Primary-134.450 Secondary-135.750 | | WEST LOWER Sector FL345/FL355/FL365/FL375 FL85 or 2000FT AGL whichever is higher Primary-133.400 Secondary-135.625 | | TBILISI APP-134.600 TWR Primary-119.000 TWR Secondary-128.000 INFO-124.150 ATIS-132.800 | | KUTAIISI APP-127.100 TWR-125.500 | | BATUMI APP-124.425 TWR-118.600 | | MESTIA INFO-121.100 | | AMBROLAURI INFO-119.850 | | NATAKHTARI 131.750 | | TELAVI TWR-120.000 | |
| CTA EAST Primary-125.125 Secondary-135.125 | | CTA WEST Primary-133.400 Secondary-135.625 | | Primary-133.500 Secondary-135.350 | | | | | | | | | | | | | | | | | | | |

Changes: Chart reissued

PAGE INTENTIONALLY LEFT BLANK

PROHIBITED, RESTRICTED AND AERIAL SPORTING AREAS CHART - INDEX CHART

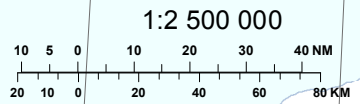
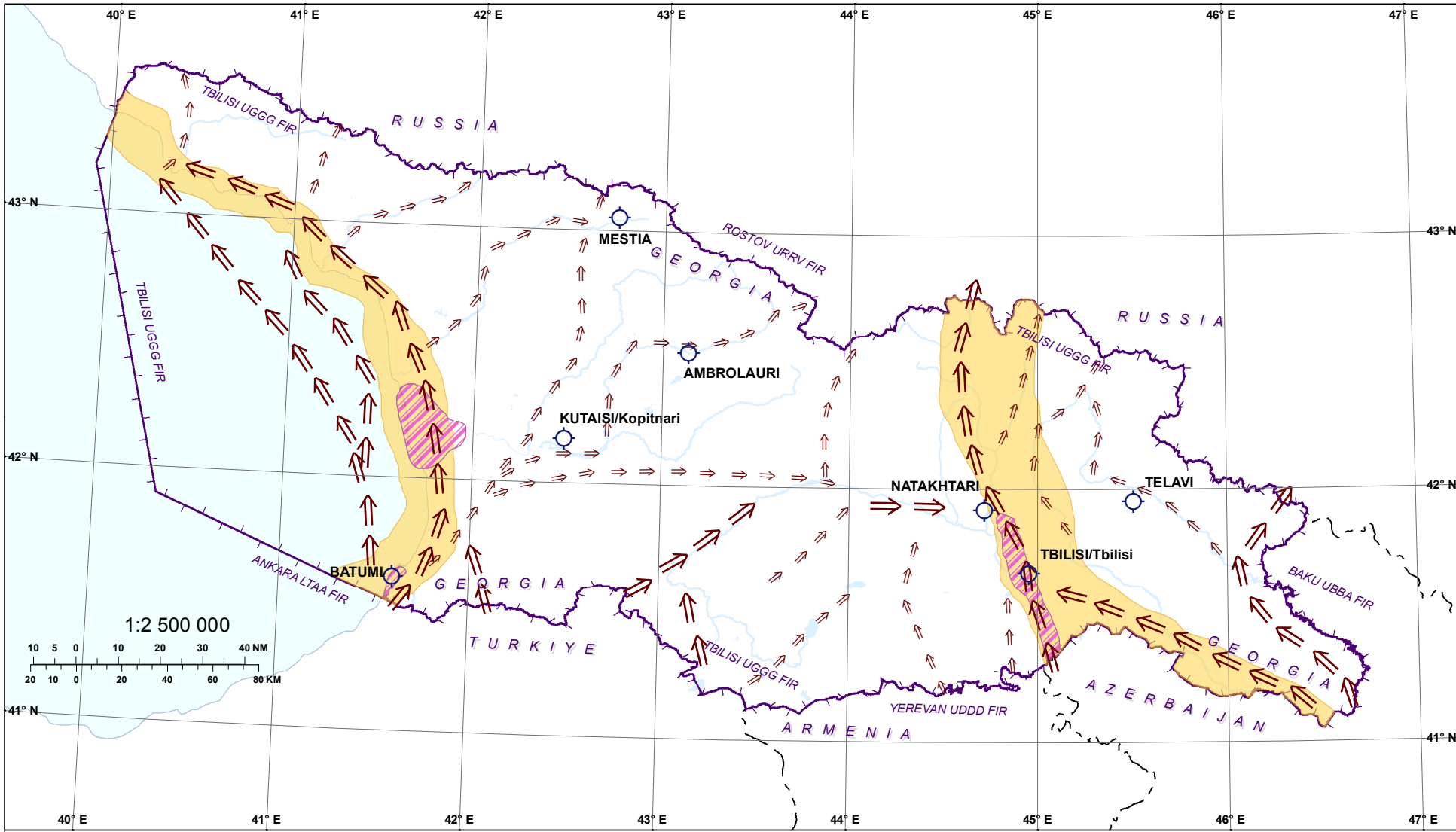


PAGE INTENTIONALLY LEFT BLANK

BIRD MIGRATION ROUTES (SPRING)

Changes: Chart reissued

© Georgian Air Navigation - Sakaeronavigatsia Ltd.



⇒ ⇒ Spring Migration

Bird Concentration Area (Autumn, Winter, Spring)

Main migration corridor

Aerodrome

Legend

--- Boundary

FIR

AIRAC AIP AMDT 05/25

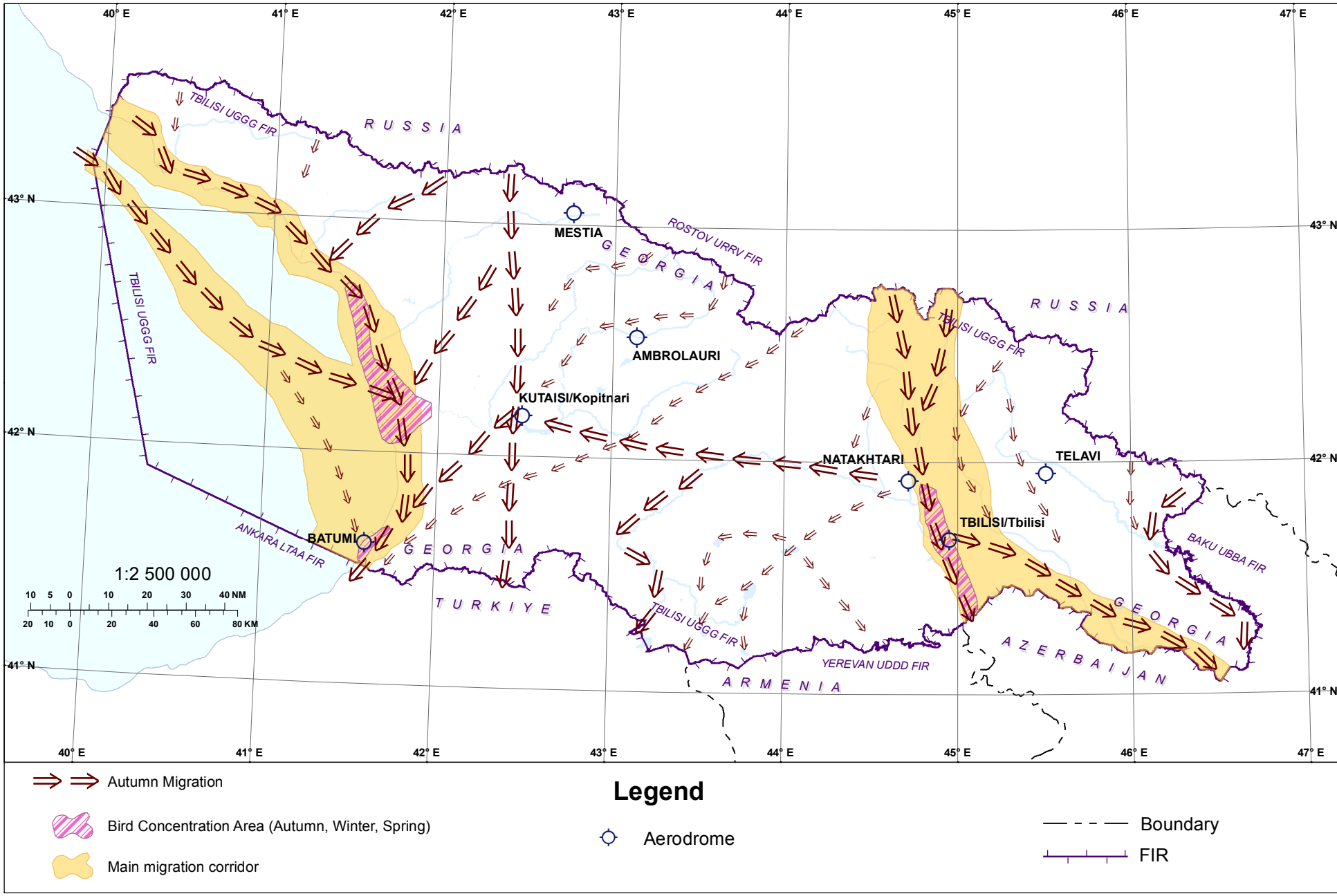
PAGE INTENTIONALLY LEFT BLANK

BIRD MIGRATION ROUTES (AUTUMN)

Changes: Chart reissued

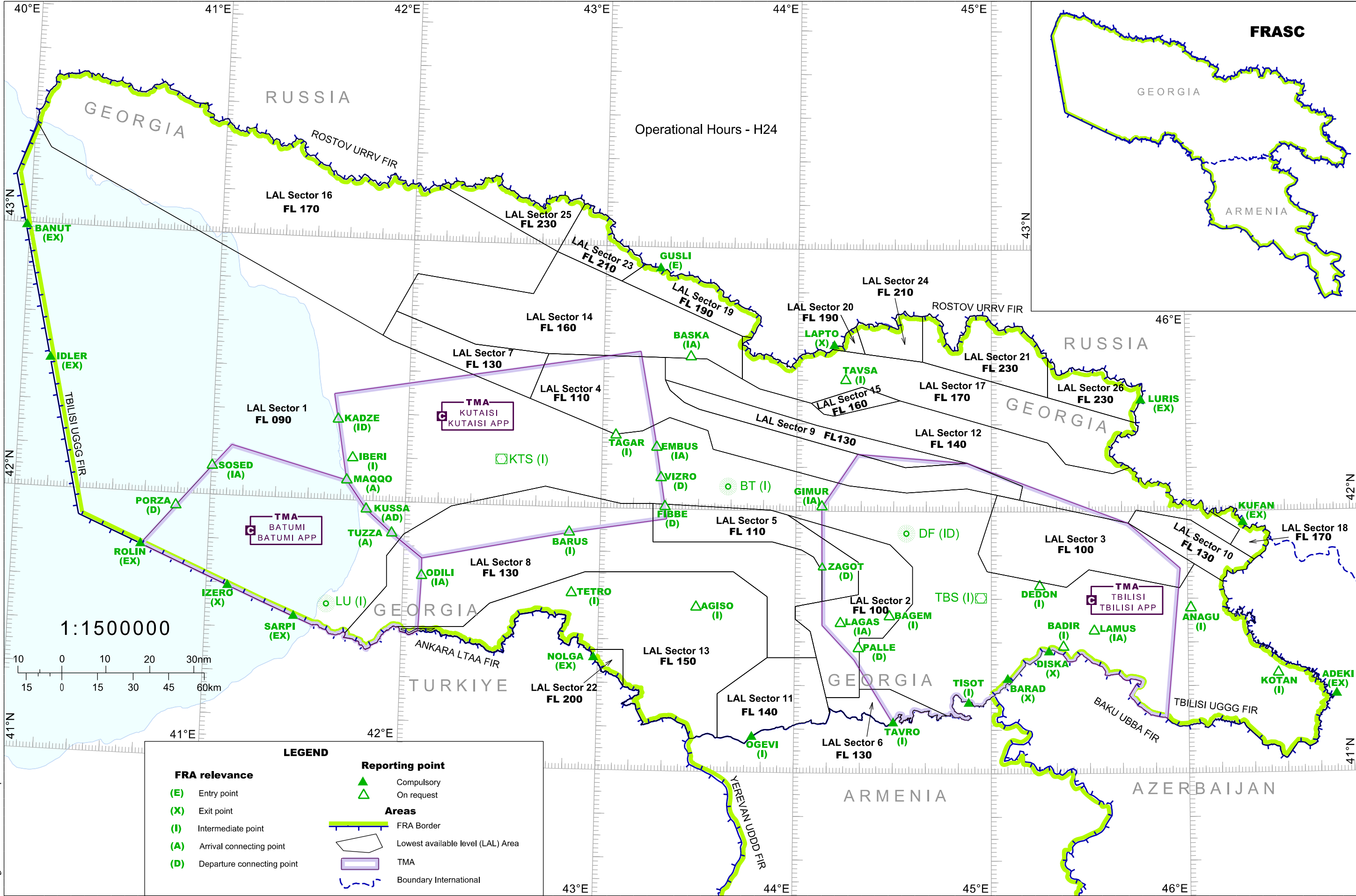
©Georgian Air Navigation - Sakaeronavigatsia Ltd.

AIRAC AIP AMDT 05/25



PAGE INTENTIONALLY LEFT BLANK

FREE ROUTE AIRSPACE SOUTH CAUCASUS (FRASC)



Changes: Sector 21 FL updated

PAGE INTENTIONALLY LEFT BLANK

FRASC Lowest Available Level (LAL) Sectors' Coordinates

| Sector | Lateral limits |
|---------------|---|
| LAL Sector 1 | 413100N 0413300E - 413600N 0411700E - 415400N 0402000E - 431100N 0395500E - 432236N 0400048E - 431723N 0400517E - 423757N 0415113E - 423646N 0415418E - 422435N 0423724E - 421653N 0430357E - 421747N 0431222E - 422058N 0432040E - 421809N 0433231E - 421352N 0433413E - 420553N 0441607E - 420420N 0443356E - 420517N 0445232E - 420349N 0450147E - 415027N 0445556E - 414618N 0445842E - 414242N 0452300E - 414642N 0452950E - 414226N 0455734E - 414754N 0460208E - 414346N 0461053E - then along the state border with Azerbaijan to - 4118N 04501E - then along the state border with Armenia to - 411320N 0444622E - 411918N 0442911E - 411915N 0441950E - 413057N 0441943E - 413059N 0442651E - 413853N 0443554E - 414721N 0443551E - 415226N 0442856E - 415430N 0441913E - 415903N 0435727E - 420008N 0435210E - 420110N 0431601E - 420101N 0430617E - 420436N 0424253E - 415925N 0421406E - 415236N 0415949E - 414731N 0415445E - 414034N 0415505E - 412933N 0414259E - then along the state border with Turkiye - 413100N 0413300E |
| LAL Sector 2 | 415903N 0435727E - 415430N 0441913E - 415226N 0442856E - 414721N 0443551E - 413853N 0443554E - 413059N 0442651E - 413057N 0441943E - 411915N 0441950E - 411721N 0441951E - 411717N 0440943E - 412627N 0440643E - 413227N 0440444E - 413510N 0440008E - 413809N 0440005E - 413920N 0440816E - 414056N 0441922E - 414820N 0441917E - 415903N 0435727E |
| LAL Sector 3 | 420349N 0450147E - 420244N 0450841E - 415720N 0454158E - 414754N 0460208E - 414226N 0455734E - 414642N 0452950E - 414242N 0452300E - 414618N 0445842E - 415027N 0445556E - 420349N 0450147E |
| LAL Sector 4 | 423458N 0424250E - 423441N 0431857E - 422935N 0431905E - 422711N 0432036E - 422429N 0432506E - 422257N 0432944E - 421008N 0443329E - 421111N 0445232E - 420553N 0450936E - 420244N 0450841E - 420349N 0450147E - 420517N 0445232E - 420420N 0443356E - 420553N 0441607E - 421352N 0433413E - 421809N 0433231E - 422058N 0432040E - 421747N 0431222E - 421653N 0430357E - 422435N 0423724E - 423458N 0424250E |
| LAL Sector 5 | 420110N 0431601E - 420008N 0435210E - 415903N 0435727E - 414820N 0441917E - 414056N 0441922E - 413920N 0440816E - 414617N 0440811E - 414927N 0440532E - 415104N 0440145E - 415250N 0435255E - 415223N 0431615E - 420110N 0431601E |
| LAL Sector 6 | 411344N 0441053E - 411717N 0440943E - 411721N 0441951E - 411915N 0441950E - 411918N 0442911E - 411320N 0444622E - then along the state border with Armenia to - 411344N 0441053E |
| LAL Sector 7 | 424334N 0415510E - 423637N 0421958E - 423458N 0424250E - 422435N 0423724E - 423646N 0415418E - 423757N 0415113E - 424334N 0415510E |
| LAL Sector 8 | 412933N 0414259E - 414034N 0415505E - 414731N 0415445E - 415236N 0415949E - 415925N 0421406E - 420436N 0424253E - 420101N 0430617E - 420110N 0431601E - 415223N 0431615E - 415250N 0435255E - 415104N 0440145E - 414927N 0440532E - 414617N 0440811E - 413920N 0440816E - 413809N 0440005E - 413510N 0440008E - 413227N 0440444E - 412627N 0440643E - 412619N 0435141E - 414016N 0435126E - 414552N 0434101E - 414511N 0425535E - 413727N 0422643E - 413151N 0421851E - 413122N 0415858E - then along the state border with Turkiye - 412933N 0414259E |
| LAL Sector 9 | 422935N 0431905E - 421939N 0440608E - 421111N 0445232E - 421008N 0443329E - 422257N 0432944E - 422429N 0432506E - 422711N 0432036E - 422935N 0431905E |
| LAL Sector 10 | 414346N 0461053E - 414754N 0460208E - 415720N 0454158E - 420018N 0454426E - 415755N 0460110E - 415213N 0461316E - 414847N 0462030E - then along the state border with Azerbaijan to - 414346N 0461053E |
| LAL Sector 11 | 410752N 0433651E - 411752N 0433639E - 412619N 0435141E - 412627N 0440643E - 411717N 0440943E - 411344N 0441053E - then along the state border with Armenia - 410752N 0433651E |

For continuation see ENR 6-13-5

PAGE INTENTIONALLY LEFT BLANK

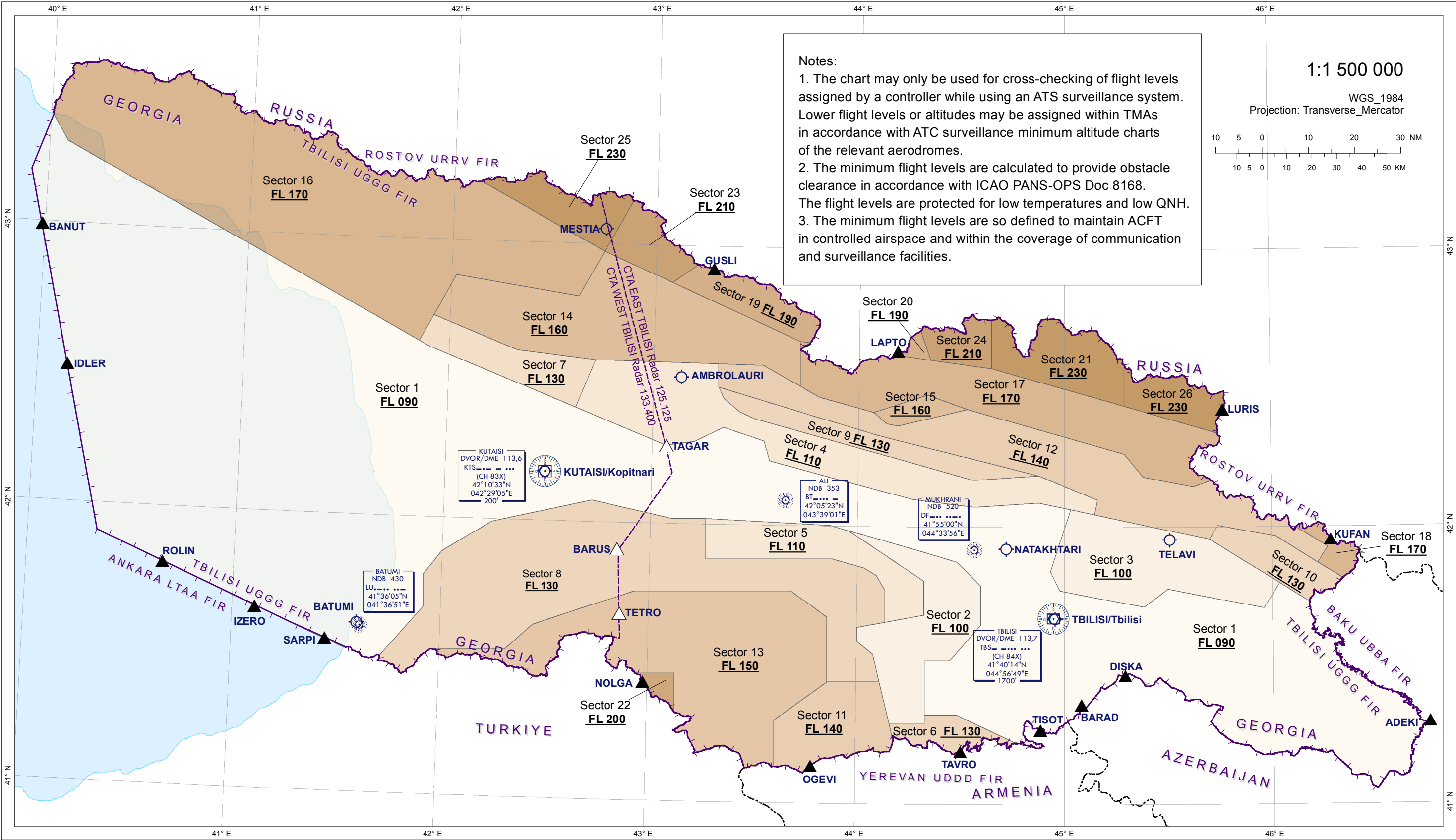
FRASC Lowest Available Level (LAL) Sectors' Coordinates (Continuation)

| Sector | Lateral limits |
|---------------|---|
| LAL Sector 12 | 415952N 0460704E - 415536N 0461608E - 415213N 0461316E - 415755N 0460110E - 420018N 0454426E - 415720N 0454158E - 420244N 0450841E - 420553N 0450936E - 421111N 0445232E - 421939N 0440608E - 422935N 0431905E - 423441N 0431857E - 423432N 0433156E - 423004N 0434253E - 422751N 0434818E - 422443N 0440421E - 422214N 0440813E - 422149N 0441126E - 422526N 0443143E - 421550N 0451719E - 421054N 0452252E - 420843N 0453720E - 421005N 0454230E - then along the state border with Russia - 415952N 0460704E |
| LAL Sector 13 | 413122N 0415858E - 413151N 0421851E - 413727N 0422643E - 414511N 0425535E - 414552N 0434101E - 414016N 0435126E - 412619N 0435141E - 411752N 0433639E - 410752N 0433651E - then along the state border with Armenia to - 4107N 04328E - then along the state border with Turkiye to - 411915N 0430803E - 412738N 0430749E - 412727N 0425641E - then along the state border with Turkiye to - 413122N 0415858E |
| LAL Sector 14 | 425821N 0424441E - 425201N 0430454E - 423953N 0434241E - 423004N 0434253E - 423432N 0433156E - 423441N 0431857E - 423458N 0424250E - 423637N 0421958E - 424334N 0415510E - 425220N 0420123E - 424835N 0423733E - 425821N 0424441E |
| LAL Sector 15 | 422443N 0440421E - 422829N 0442001E - 422526N 0443143E - 422149N 0441126E - 422214N 0440813E - 422443N 0440421E |
| LAL Sector 16 | 431243N 0420754E - 425821N 0424441E - 424835N 0423733E - 425220N 0420123E - 424334N 0415510E - 423757N 0415113E - 431723N 0400517E - 432236N 0400048E - 432300N 0400100E - then along the state border with Russia to - 431243N 0420754E |
| LAL Sector 17 | 423705N 0441046E - 423602N 0442052E - 423418N 0443843E - 422610N 0451722E - 422017N 0454433E - then along the state border with Russia to - 421005N 0454230E - 420843N 0453720E - 421054N 0452252E - 421550N 0451719E - 422526N 0443143E - 422829N 0442001E - 422443N 0440421E - 422751N 0434818E - 423004N 0434253E - 423953N 0434241E - 423935N 0434543E - then along the state border with Russia to - 423705N 0441046E |
| LAL Sector 18 | 414847N 0462030E - 415213N 0461316E - 415536N 0461608E - 415952N 0460704E - then along the state border with Russia to - 4155N 04625E - then along the state border with Azerbaijan - 414847N 0462030E |
| LAL Sector 19 | 423935N 0434543E - 423953N 0434241E - 425201N 0430454E - 425554N 0431214E - then along the state border with Russia to - 423935N 0434543E |
| LAL Sector 20 | 424223N 0441758E - 423602N 0442052E - 423705N 0441046E - then along the state border with Russia to - 424223N 0441758E |
| LAL Sector 21 | 423505N 0451725E - 422610N 0451722E - 423418N 0443843E - 424446N 0443840E - then along the state border with Russia to - 423505N 0451725E |
| LAL Sector 22 | 412727N 0425641E - 412738N 0430749E - 411915N 0430803E - then along the state border with Turkiye to - 412727N 0425641E |
| LAL Sector 23 | 430923N 0425248E - 425821N 0424441E - 425201N 0430454E - 425554N 0431214E - then along the state border with Russia to - 430923N 0425248E |
| LAL Sector 24 | 424446N 0443840E - 423418N 0443843E - 423602N 0442052E - 424223N 0441758E - then along the state border with Russia to - 424446N 0443840E |
| LAL Sector 25 | 430923N 0425248E - 425821N 0424441E - 431243N 0420754E - then along the state border with Russia to - 430923N 0425248E |
| LAL Sector 26 | 422017N 0454433E - 422610N 0451722E - 423505N 0451725E - then along the state border with Russia to - 422017N 0454433E |

PAGE INTENTIONALLY LEFT BLANK

ENROUTE ATC SURVEILLANCE MINIMUM ALTITUDE CHART

G E O R G I A



LEGEND

COMMUNICATION FACILITIES

| | | | | | | | | | | |
|-----------|-----|---------|-----|--------------------------|---|---|---|---|--|--|
| Aerodrome | NDB | VOR/DME | FIR | Boundary (International) | TBILISI ACC Tbilisi Radar CTA EAST Primary - 125.125 Secondary - 135.125 CTA WEST Primary - 133.400 Secondary - 135.625 | EAST UPPER Sector FL660 FL345/FL355/FL365/FL375 Primary - 133.500 Secondary - 135.350 EAST LOWER Sector FL345/FL355/FL365/FL375 FL85 or 2000FT AGL whichever is higher Primary - 125.125 Secondary - 135.125 | WEST UPPER Sector FL660 FL345/FL355/FL365/FL375 Primary - 134.450 Secondary - 135.750 WEST LOWER Sector FL345/FL355/FL365/FL375 FL85 or 2000FT AGL whichever is higher Primary - 133.400 Secondary - 135.625 | TBILISI APP - 134.600 TWR Primary - 119.000 TWR Secondary - 128.000 INFO - 124.150 ATIS - 132.800 | KUTAISSI APP - 127.100 TWR - 125.500 BATUMI APP - 124.425 TWR - 118.600 | MESTIA INFO - 121.100 AMBROLAURI INFO - 119.850 NATAKHTARI 131.750 TELAVI TWR-120.000 |
|-----------|-----|---------|-----|--------------------------|---|---|---|---|--|--|

PAGE INTENTIONALLY LEFT BLANK

ENROUTE ATCSMAC Sectors' Coordinates

| Sector | Lateral limits |
|-----------|---|
| Sector 1 | 413100N 0413300E - 413600N 0411700E - 415400N 0402000E - 431100N 0395500E - 432236N 0400048E - 431723N 0400517E - 423757N 0415113E - 423646N 0415418E - 422435N 0423724E - 421653N 0430357E - 421747N 0431222E - 422058N 0432040E - 421809N 0433231E - 421352N 0433413E - 420553N 0441607E - 420420N 0443356E - 420517N 0445232E - 420349N 0450147E - 415027N 0445556E - 414618N 0445842E - 414242N 0452300E - 414642N 0452950E - 414226N 0455734E - 414754N 0460208E - 414346N 0461053E - then along the state border with Azerbaijan to - 4118N 04501E - then along the state border with Armenia to - 411320N 0444622E - 411918N 0442911E - 411915N 0441950E - 413057N 0441943E - 413059N 0442651E - 413853N 0443554E - 414721N 0443551E - 415226N 0442856E - 415430N 0441913E - 415903N 0435727E - 420008N 0435210E - 420110N 0431601E - 420101N 0430617E - 420436N 0424253E - 415925N 0421406E - 415236N 0415949E - 414731N 0415445E - 414034N 0415505E - 412933N 0414259E - then along the state border with Turkiye - 413100N 0413300E |
| Sector 2 | 415903N 0435727E - 415430N 0441913E - 415226N 0442856E - 414721N 0443551E - 413853N 0443554E - 413059N 0442651E - 413057N 0441943E - 411915N 0441950E - 411721N 0441951E - 411717N 0440943E - 412627N 0440643E - 413227N 0440444E - 413510N 0440008E - 413809N 0440005E - 413920N 0440816E - 414056N 0441922E - 414820N 0441917E - 415903N 0435727E |
| Sector 3 | 420349N 0450147E - 420244N 0450841E - 415720N 0454158E - 414754N 0460208E - 414226N 0455734E - 414642N 0452950E - 414242N 0452300E - 414618N 0445842E - 415027N 0445556E - 420349N 0450147E |
| Sector 4 | 423458N 0424250E - 423441N 0431857E - 422935N 0431905E - 422711N 0432036E - 422429N 0432506E - 422257N 0432944E - 421008N 0443329E - 421111N 0445232E - 420553N 0450936E - 420244N 0450841E - 420349N 0450147E - 420517N 0445232E - 420420N 0443356E - 420553N 0441607E - 421352N 0433413E - 421809N 0433231E - 422058N 0432040E - 421747N 0431222E - 421653N 0430357E - 422435N 0423724E - 423458N 0424250E |
| Sector 5 | 420110N 0431601E - 420008N 0435210E - 415903N 0435727E - 414820N 0441917E - 414056N 0441922E - 413920N 0440816E - 414617N 0440811E - 414927N 0440532E - 415104N 0440145E - 415250N 0435255E - 415223N 0431615E - 420110N 0431601E |
| Sector 6 | 411344N 0441053E - 411717N 0440943E - 411721N 0441951E - 411915N 0441950E - 411918N 0442911E - 411320N 0444622E - then along the state border with Armenia to - 411344N 0441053E |
| Sector 7 | 424334N 0415510E - 423637N 0421958E - 423458N 0424250E - 422435N 0423724E - 423646N 0415418E - 423757N 0415113E - 424334N 0415510E |
| Sector 8 | 412933N 0414259E - 414034N 0415505E - 414731N 0415445E - 415236N 0415949E - 415925N 0421406E - 420436N 0424253E - 420101N 0430617E - 420110N 0431601E - 415223N 0431615E - 415250N 0435255E - 415104N 0440145E - 414927N 0440532E - 414617N 0440811E - 413920N 0440816E - 413809N 0440005E - 413510N 0440008E - 413227N 0440444E - 412627N 0440643E - 412619N 0435141E - 414016N 0435126E - 414552N 0434101E - 414511N 0425535E - 413727N 0422643E - 413151N 0421851E - 413122N 0415858E - then along the state border with Turkiye - 412933N 0414259E |
| Sector 9 | 422935N 0431905E - 421939N 0440608E - 421111N 0445232E - 421008N 0443329E - 422257N 0432944E - 422429N 0432506E - 422711N 0432036E - 422935N 0431905E |
| Sector 10 | 414346N 0461053E - 414754N 0460208E - 415720N 0454158E - 420018N 0454426E - 415755N 0460110E - 415213N 0461316E - 414847N 0462030E - then along the state border with Azerbaijan to - 414346N 0461053E |
| Sector 11 | 410752N 0433651E - 411752N 0433639E - 412619N 0435141E - 412627N 0440643E - 411717N 0440943E - 411344N 0441053E - then along the state border with Armenia - 410752N 0433651E |

For continuation see ENR 6-15-5

PAGE INTENTIONALLY LEFT BLANK

ENROUTE ATCSMAC Sectors' Coordinates (Continuation)

| Sector | Lateral limits |
|-----------|---|
| Sector 12 | 415952N 0460704E - 415536N 0461608E - 415213N 0461316E - 415755N 0460110E - 420018N 0454426E - 415720N 0454158E - 420244N 0450841E - 420553N 0450936E - 421111N 0445232E - 421939N 0440608E - 422935N 0431905E - 423441N 0431857E - 423432N 0433156E - 423004N 0434253E - 422751N 0434818E - 422443N 0440421E - 422214N 0440813E - 422149N 0441126E - 422526N 0443143E - 421550N 0451719E - 421054N 0452252E - 420843N 0453720E - 421005N 0454230E - then along the state border with Russia - 415952N 0460704E |
| Sector 13 | 413122N 0415858E - 413151N 0421851E - 413727N 0422643E - 414511N 0425535E - 414552N 0434101E - 414016N 0435126E - 412619N 0435141E - 411752N 0433639E - 410752N 0433651E - then along the state border with Armenia to - 4107N 04328E - then along the state border with Turkiye to - 411915N 0430803E - 412738N 0430749E - 412727N 0425641E - then along the state border with Turkiye to - 413122N 0415858E |
| Sector 14 | 425821N 0424441E - 425201N 0430454E - 423953N 0434241E - 423004N 0434253E - 423432N 0433156E - 423441N 0431857E - 423458N 0424250E - 423637N 0421958E - 424334N 0415510E - 425220N 0420123E - 424835N 0423733E - 425821N 0424441E |
| Sector 15 | 422443N 0440421E - 422829N 0442001E - 422526N 0443143E - 422149N 0441126E - 422214N 0440813E - 422443N 0440421E |
| Sector 16 | 431243N 0420754E - 425821N 0424441E - 424835N 0423733E - 425220N 0420123E - 424334N 0415510E - 423757N 0415113E - 431723N 0400517E - 432236N 0400048E - 432300N 0400100E - then along the state border with Russia to - 431243N 0420754E |
| Sector 17 | 423705N 0441046E - 423602N 0442052E - 423418N 0443843E - 422610N 0451722E - 422017N 0454433E - then along the state border with Russia to - 421005N 0454230E - 420843N 0453720E - 421054N 0452252E - 421550N 0451719E - 422526N 0443143E - 422829N 0442001E - 422443N 0440421E - 422751N 0434818E - 423004N 0434253E - 423953N 0434241E - 423935N 0434543E - then along the state border with Russia to - 423705N 0441046E |
| Sector 18 | 414847N 0462030E - 415213N 0461316E - 415536N 0461608E - 415952N 0460704E - then along the state border with Russia to - 4155N 04625E - then along the state border with Azerbaijan - 414847N 0462030E |
| Sector 19 | 423935N 0434543E - 423953N 0434241E - 425201N 0430454E - 425554N 0431214E - then along the state border with Russia to - 423935N 0434543E |
| Sector 20 | 424223N 0441758E - 423602N 0442052E - 423705N 0441046E - then along the state border with Russia to - 424223N 0441758E |
| Sector 21 | 423505N 0451725E - 422610N 0451722E - 423418N 0443843E - 424446N 0443840E - then along the state border with Russia to - 423505N 0451725E |
| Sector 22 | 412727N 0425641E - 412738N 0430749E - 411915N 0430803E - then along the state border with Turkiye to - 412727N 0425641E |
| Sector 23 | 430923N 0425248E - 425821N 0424441E - 425201N 0430454E - 425554N 0431214E - then along the state border with Russia to - 430923N 0425248E |
| Sector 24 | 424446N 0443840E - 423418N 0443843E - 423602N 0442052E - 424223N 0441758E - then along the state border with Russia to - 424446N 0443840E |
| Sector 25 | 430923N 0425248E - 425821N 0424441E - 431243N 0420754E - then along the state border with Russia to - 430923N 0425248E |
| Sector 26 | 422017N 0454433E - 422610N 0451722E - 423505N 0451725E - then along the state border with Russia to - 422017N 0454433E |

PAGE INTENTIONALLY LEFT BLANK